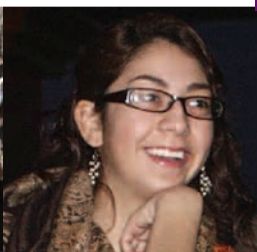




VALENTINE  
FOUNDATION

FUNDING  
SOCIAL  
CHANGE  
FOR  
WOMEN &  
GIRLS

2010  
ANNUAL  
REPORT



# Greetings from The Valentine Foundation

As I write this we are recovering from a nasty winter storm that has depleted our energy, optimism and good will. Everyone's nerves are frayed, and civility has almost disappeared from our daily interactions. Spring rejuvenation seems a long way off, so we turn to the cozy warmth of family, comfort food, or a favorite book.

Comfort food. I had a good heaping portion of it at the Valentine Foundation 25th anniversary celebration in January. The celebration was the culminating event of our 2010 project that gifted 10 organizations with grants totaling \$25,000. This project taught others about the difficult decisions that come with responsible philanthropy, and established a new community of givers that is committed to social change. It also connected 20 amazing, community-oriented women who may not have otherwise met.

Connections. One of the untold benefits of philanthropy. Connecting to others, connecting to a cause. Joining forces, collaborating, reaching out. It's a way to share knowledge as well as a path to friendship.

Throughout the anniversary project I heard stories of friendship as mentors and donors connected while they researched organizations and talked about issues close to their hearts. At the celebration our Executive Director talked about Phoebe Valentine creating community with her trustees. Long discussions about progress and security for women and girls, broader issues of social change, and updates on family all took place over food in the comfortable rooms of her home. That tradition has changed little since the beginning. Today's trustees share much of their lives with each other during their tenure, fostering a strong sense of community.

That sense of community propels the Foundation's work today. The 25th anniversary philanthropists, our beneficiaries, and trustees know that everyone benefits when women and girls succeed. All of our 2010 grantees are advancing their agendas of progress for women and girls, fostering success through leadership development, improved mental and physical health, and personal and economic security. You can read more about their education and advocacy work in this report.

The Foundation made a bold move in 2010 by creating new philanthropists, and we are very proud of that accomplishment. The anniversary project also demonstrated the importance of helping women find their voices through philanthropy.

Thank you for supporting our work. We are pleased to share the highlights of this momentous year with you, and hope you will continue to support the progress of women and girls in your world and beyond.



Linda White, Chair



COVER PHOTOS: ROBIN MILLER

THANKS TO:

LIL' FILMMAKERS

GIRLS ROCK PHILLY

COLLEGE & WORKFORCE BOUND  
WORKSHOP FOR TEEN PARENTS

## Valentine Foundation Trustees

Linda White, Chair  
Peggy Curchack, Vice Chair  
Nancy Kirby  
Alexandra Samuels  
Barbara Silzle  
Shawn Towey  
Tracy Tripp

**Executive Director**  
Alexandra V. A. Frazier

**The Valentine Foundation**  
c/o Alexandra V. A. Frazier  
409 Merion Hill Lane  
West Conshohocken, PA 19428  
610-525-7200  
info@valentinefoundation.org  
www.valentinefoundation.org



# 2010 Grantees

<b>Arts Engine, Inc.</b>	<b>Hearts and Minds Campaign</b>	\$10,000
supports, produces, and distributes independent media of consequence and promotes the use of independent media by advocates, educators and the general public. The Media That Matters: Hearts and Minds Campaign seeks to protect and expand the gains made towards universal health care.		
<b>Childspace Cooperative Development, Inc.*</b>	<b>Leadership &amp; Organizing</b>	\$10,000
works to improve the quality of jobs for traditionally low-paid child care workers, who are predominantly women, and, thereby, the care received by children.		
<b>Clara Bell Duvall Education Fund, ACLU of PA</b>	<b>Minors' Rights Project</b>	\$10,000
defends and advances reproductive rights and liberties in Pennsylvania through research, education, advocacy, and litigation to ensure access to safe and legal reproductive health services for all. The Minors' Rights initiative educates healthcare providers about consent and confidentiality issues when minors seek care.		
<b>Community Legal Services of Philadelphia</b>	<b>Case Management System</b>	\$10,000
provides a wide range of free civil, legal services for low-income Philadelphians. Development of their client-tracking database will aid them in compiling and analyzing the impact their work has on mothers and families.		
<b>PathWaysPA</b>	<b>General Operating</b>	\$10,000
serves thousands of women and children in the Greater Philadelphia region through services, community education and political advocacy.		
<b>Public Citizens for Children and Youth**</b>	<b>Pregnant and Parenting Teens Project</b>	\$10,000
PCCY advocates for children's interests. The Pregnant and Parenting Teens Project is conducting an outreach campaign to build a bridge between health care providers and educators and to encourage pregnant and parenting youth to complete their education.		
<b>Supportive Older Women's Network</b>	<b>Grand Family Resource Center</b>	\$10,000
has provided education and advocacy support for older women in the region for 25 years. The Grand Family Resource Center focuses on advocating for and supporting grandmothers raising their grandchildren.		
<b>Women's Campaign International</b>	<b>Global Awareness and Leadership Series</b>	\$10,000
advances opportunities for women to actively participate in public advocacy, market and political processes. In providing the requisite skills, knowledge and culturally-sensitive support, they develop leaders who transform the lives of everyone they serve.		
<b>Women's Community Revitalization Project</b>	<b>Public Land for Public Benefit Initiative</b>	\$10,000
works towards women's equality primarily through housing and other economic development projects. Its policy and land-trust initiatives seek to reclaim vacant land and create a vehicle for the community to determine future development.		
<b>Women's Law Project</b>	<b>General Operating</b>	\$5,000
engages in high-impact litigation, advocacy, and education to create a more just and equitable society by advancing the rights and status of all women throughout their lives.		
<b>Women's Way‡</b>	<b>Education and Advocacy Initiative</b>	\$13,000
provides funds and education and advocacy support for organizations focused on providing services and removing obstacles for women and girls. Among its public policy initiatives are reproductive justice and earned sick time for employees in Philadelphia.		
<b>TOTAL</b>		<b>\$108,000</b>

\*second payment on a 3-year grant totalling \$30,000  
‡second payment on a 3-year grant totalling \$39,000

\*\*second payment on a 2-year grant totalling \$20,000



# The Gift of Giving

PHOTO:  
ROBIN MILLER

## Valentine Foundation 25th Anniversary Project

Almost three decades ago Phoebe Valentine threw a party. That party was designed to introduce women she knew as friends, colleagues, and acquaintances to sharing resources with others seeking to do good – and in the process doing good oneself. The original Birthday Party members had an amazing and illuminating experience and, out of that Phoebe created the Valentine Foundation. Our 25th Anniversary Party was designed to celebrate and emulate the beautiful multi-layered nature of Phoebe's philanthropic vision: that the opportunity to give can be as transformative as receipt of a project-making grant. With that paradigm in mind, the Project Committee chose ten donors and paired them with ten mentors who could share their knowledge of grantmaking, and those pairs chose and shepherded ten fresh organizations through the grant process. We are thrilled to expand the Valentine sisterhood and continue to share and sustain Phoebe's vision.

In our first 25 years, the Valentine Foundation has made 552 grants in the areas of reproductive rights, domestic violence, health, housing, child care, employment and education, just to name a few. Our grants have totaled over 5 million dollars!

## 25th Anniversary Committee

Pam Bryer  
Robin Eisenberg  
Pat Feeney  
Alexandra Frazier  
Susan K. Garrison  
Brenda Green  
Cynthia Jetter  
Nancy Kirby

Nora Lichtash  
Leslie Matthews  
Mary McTernan  
Ann Ricksecker  
Alexandra Samuels  
Shelley Smith  
Linda White

Top row (l to r): Valeria Harvell, Wanda Moore, Maritza Santiago, Nora Lichtash, Shirley Latham, Alex Samuels, Brenda Green, Nancy Kirby, Tara Jones, Pam Bryer, Susan Garrison, Tammy James  
Second row: Alexandra Frazier, Leslie Matthews, Shayna Israel, Linda White, Cynthia Jetter  
Bottom row: Robin Eisenberg, Mary McTernan, Ann Ricksecker, Talisa Superville, Ellen Rosenberg

# Anniversary Project Grants

Each donor designated a single grant of \$2500 to the organization or project of her choice

ORGANIZATION/PROJECT	DONOR	MENTOR
Chester County Intermediate Unit provides education services to 12 Chester County school districts. The Anniversary Project helped fund their <a href="#">College and Workforce Bound Workshops for Teen Parents</a> .	Tammy James	Pam Bryer
College Bound Home for Girls is a residential community designed to help young women, 14-21, who are in or have just aged out of foster care services to fulfill their goals of successfully transitioning into adulthood and continue on to post-secondary education.	Ellen Lissy Rosenberg	Brenda Green
Dress for Success Philadelphia provides appropriate wardrobe options for women entering or reentering the workforce, along with career development supports.	Maritza Santiago	Robin Eisenberg
Garage Community and Youth Center <a href="#">The Girl Talk</a> program provides a safe, peer-focused space for high school girls to discuss sensitive issues with one another, like body-image, bullying, dating and relationships, and pregnancy.	Shayna Israel	Leslie Matthews
Girls Rock Philly lets girls rock out, learning about the music industry along with leadership and team-building skills while they form bands and perform original works.	Kathryn Pannepacker	Mary McTernan
Lil' Filmmakers provides girls with opportunities to learn about filmmaking and also produce important and topical works, such as the short documentary, <a href="#">Unwanted Behavior</a> , on bullying among teens.	Wanda Moore	Cynthia Jetter
Mothers' Home provides a range of services for vulnerable pregnant women, from transitional housing to child birth and nutritional classes.	Talisa Superville	Nancy Kirby
Phenomenal Young Ladies, Inc. (PYL) strives to enrich the lives of adolescent girls, primarily in Chester, through participation in community service and activities that broaden the scope of their cultural experience. The Anniversary project helped fund the " <a href="#">My Black is Beautiful</a> " Youth Forum.	Tara Jones	Susan Garrison
Women Against Abuse, Inc. is a service and advocacy organization dedicated to helping women prevail over domestic violence, both culturally and personally.	Shirley Latham	Nora Lichtash
Youth Encourage to Achieve, Inc. provides positive recreational activities for neighborhood teen girls which enhance self esteem, develop artistic talents, foster leadership skills, encourage physical fitness, and cultivate self discipline.	Valeria Harvell	Ann Ricksecker





## Farewell to Valentine

Alexandra Samuels

Past President and Trustee, 2005-2011

It has been a privilege and an honor to serve on the Valentine Foundation Board of Directors. My tenure began with the 20th anniversary when the Foundation launched its campaign to raise funds for leadership development for women executive directors and rising stars working on behalf of women and girls issues. Today the fund makes multiple grants annually for Valentine Fellows to pursue professional development opportunities. We entered 2011 celebrating the 25th anniversary by empowering 10 women from diverse backgrounds in making individual gifts of \$2,500 to the nonprofits of their choice expanding the power and impact of women giving to community.

It has been amazingly rewarding to have gotten to know and advocate on behalf of organizations addressing teen parenthood; the gender and minority gap in those interested and pursuing degrees and careers in the sciences; economic self sufficiency among young women; and policies advancing the needs of women and girls who are victims of domestic violence and sexual assault, extending sick time leave and affordable access for both general and reproductive health care. None of our efforts at Valentine would be possible without the amazing leaders and staff behind the incredible non profit organizations dedicated to social change day by day.

During my tenure, the Foundation underwent an intensive

strategic planning process that focused the Foundation's efforts and resulted in a number of changes that I am particularly proud of including the decisions to:

- 1) remove caps in the number of years that a grantee can be funded;
- 2) provide multi-year funding;
- 3) expand the Foundation's grantmaking to programs that include men when the purpose of the program or the organization is to benefit women and girls; and
- 4) adopt a funding model that seeks social change that is strategic and nationally recognized as effective.

Over six years, the Foundation has reviewed and updated all of its internal policies from grantmaking to governance and made sure that its operations meet best practices and the highest ethical standards.

What makes the Valentine Foundation experience so special and the Board involvement so rewarding are the other women who join in this journey at the same time. Each trustee has enriched my understanding bringing new ideas, multiple talents, and diverse perspectives. Though I am departing the Board, the Valentine Foundation, the people and the organizations will remain a part of me as I join the incredible ranks of the Foundation's alumnae.

### The Birthday Project Workbooks

Step-by-step instructions  
for conducting your own  
Mentor/Donor Giving Project

## You Can Do a Birthday Project

To help you plan your Birthday Project, we've created two Birthday Project Workbooks. *The Mentor's Birthday Project Workbook* provides step-by-step instructions, planning worksheets, and reflection pages to guide Mentors through the giving project. *The Donor's Birthday Project Workbook* is a series of worksheets, checklists, and reflection pages to help Donors select their grantees. The workbooks are available free from:

<http://www.valentinefoundation.org/workbooks.php>



**Our 25th Anniversary Breakfast, the culmination of the Valentine Foundation's year-long Anniversary Project** brought together past and current trustees, donors and mentors, grantees, Visionary Leadership Fund volunteers and donors, and more.

**Kathryn Pannepacker**, Donor, explained how she chose Girls Rock Philly as her grantee. "When I stumbled upon Girls Rock Philly while doing my research, I was in imagination's 'time machine' of possibility and inspiration, of girl power and...self-esteem meets self-expression."



Girls Rock Philly camper **Emily McCann** performed her own songs. "Actually, this isn't my first time performing at World Cafe Live..."



**Beth Warshaw-Duncan**, Director of Girls Rock Philly, discussed her own journey to starting the organization and the impact it has on girls who perform.

**"Phoebe's impact on the world continues to expand and ripple outwards, affecting trustees, grantees and all of the women and girls in the programs we support."**

**Alexandra Frazier** has been Valentine's Executive Director since its founding. She talked about Phoebe Valentine's spirit and mission, and the impact of the foundation she founded.

**Linda White**, Chair of the Board of Trustees.



**Mary McTernan**, former trustee, current Leadership committee member, was Kathryn's Birthday Project Mentor — "and she makes one heck of a bran muffin."



# VISIONARY LEADERSHIP FUND

of the VALENTINE  
FOUNDATION

## Supporting the next generation of women leaders

To support the Valentine Foundation's commitment to developing the next generation of local women leaders of non-profits serving women and girls, the Fund provides grants through which agency directors and staff members refine their skills and increase the impact and effectiveness of their agencies as well as their own personal impact on their workplace and community.

The Trustees have selected three Philadelphia programs to which to send Valentine Visionary Leaders: the Non-Profit Executive Leadership Institute (NELI) at Bryn Mawr College; Leadership, Inc. in Philadelphia; and CLEAR (Cultivating Leadership, Excellence and Responsibility) Circles and Career Development at the Non-Profit Center at LaSalle University.

### Visionary Leadership Fund Committee

Cynthia Jetter  
Natalie Levkovich  
Mary McTernan  
Ann Ricksecker

Alexandra Samuels  
Barbara Silzle  
Cheryl Weiss

### Donors to the Valentine Foundation Leadership Fund

#### *Calendar Year 2010*

Linda Lee Alter  
Jocelyn Jones Arnold  
Janet Blynn  
Mr. and Mrs. Mark Garrison  
Sally W. Castle  
Susan Catherwood  
Isaac H. Clothier IV  
Peggy Curchack  
Robin Eisenberg and  
Bean Meles  
Susan K. Garrison  
Tucker Gresh  
Brita Gwinn

The Hess Foundation  
Susan Lowry  
Stephanie Lucas  
Joan Mackie  
Bonnie and Peter  
McCausland  
Neilda E. Mott  
Catherine Ormerod  
Lawrence and Pamela  
Phelan  
Barbara Press  
Miles Smith  
Janet Dickerson Stephens

### 2010 Visionary Leadership Fellows

#### *Leadership Philadelphia\**

Martha B. Davis, Institute for Safe Families

#### *NELI*

**\$5,000**

Jeanne Ciocca, Resources for Children's Health

Jeannine McCullough, Peoples's Emergency Center

Kyra Strong, Peoples's Emergency Center

Dolly Wideman-Scott, Domestic Violence Center of  
Chester County

#### *Non-Profit Center at LaSalle*

**\$5,000**

#### *CLEAR Circles for Women*

Sarah Friedman, Women's Way

Debasri Ghosh, Women in Transition, Inc.

Carole Kindling, The Birth Center

Allison Martinez, Lakeside Educational Network

Susan Nicodemus Quinn, Wall Street Theater

Carla Robinson, Logan CDC

Norah Salmon, AIDS Coalition of Southern New Jersey

#### *Career Development*

Janelle Harris, The Arts and Spirituality Center

Jim Jones, Turning Points for Children

Maria Leonetti, Ed Snyder Youth Hockey Foundation

Tanya Rambert, Philadelphia, VIP

Sy Scholfied, Urban League of Philadelphia

Amy Tressier, Eagles Charitable Foundation

Lori Walsh, CARIE

*\*Funded in 2009 for Leadership's 2010 program year.*

Leadership Fund guidelines are changing in 2011,  
Check the website in June for more details.  
Proposals are due July 20.